

ADCOCK

R E A L E S T A T E



33 Bonython Road Kersbrook SA

3 3 20

Close to scenic tourist drives, distilleries, wineries and nature trails, the next pivotal step could be your life's destiny calling on 32 rural hectares with divine views and event cues galore.

Edging the quaint town of Kersbrook, Ashwood Estate makes an incredible cellar door statement under the award-winning Malcolm Creek Wines label, yet where you take this boutique property next - with its pool, tennis court, exceptional wine shedding, infrastructure and livestock capacity - is open for business and/or pleasure.

As a sophisticated home for an entrepreneurial couple or family, or a boutique 'Kingsford' style homestay approaching peak wedding season, the possibilities are

Type : Acreage/Semi-Rural
Price : Contact Agent
Land Size : 32.37 ha
View : <https://www.adcock.com.au/8147280>

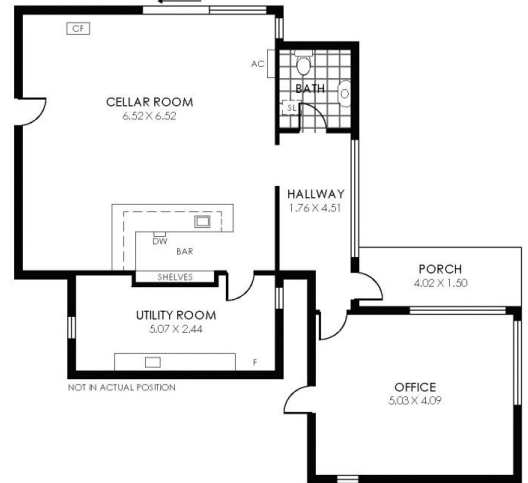
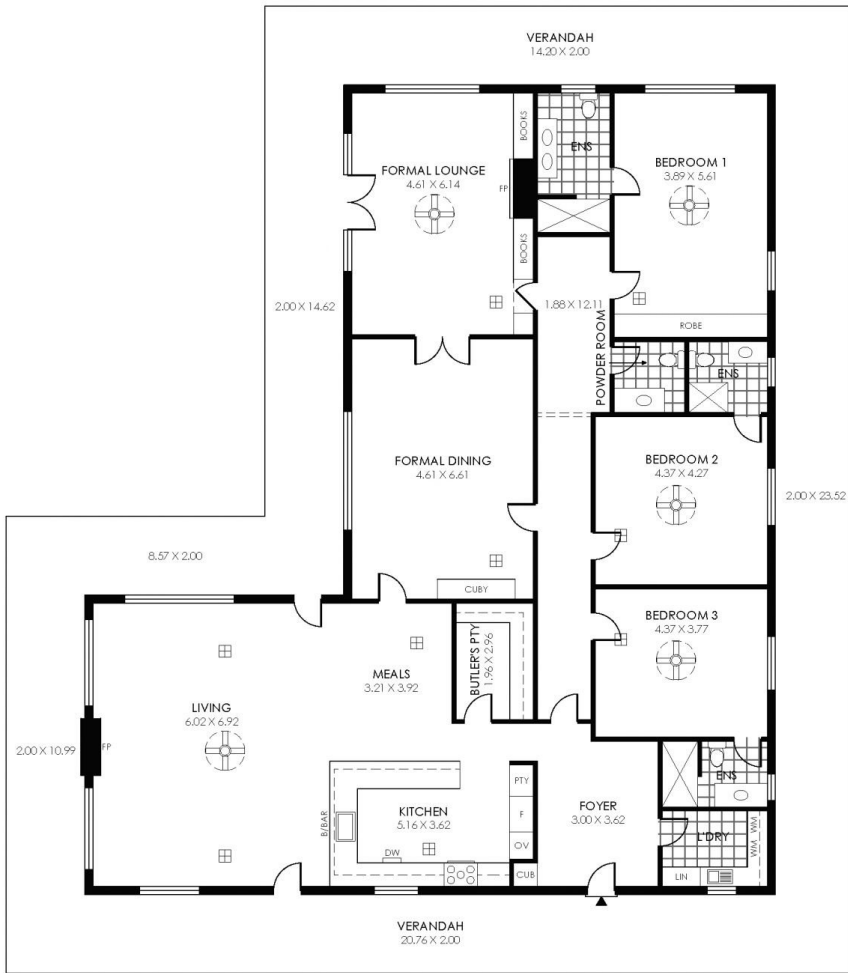


Andrew Adcock
08 8388 4777



Jake Adcock
08 8388 4777

[For full version visit the website](#)



- 1111m²

TOTAL
- 403m²

Living
- 524m²

Shed/
Garage
- 168m²

Verandah
- 6m²

Porch
- 10m²

Undercover
Entertaining



