



6 Riley Street Lobethal SA

4 2 2

Yes, you can blend a new build into an historic Hills town; and etched into 950sqm of ready-retained land, what began as an epic blueprint is now a Fairmont Homes 4-bedroom lifestyle ready to be realised?

It's like spring has sprung in this quiet pocket revealing a family design that's bound to bloom where incredible scale meets urban sophistication, solar efficiency, double-glazed bedroom windows, and north-facing panes that bow to the beauty of its town-edge setting.

All you need to do, is dial up your resident landscaper.

And the only effort indoors will be taking long wide hallway strides from entry, past three leading double bedrooms, two

Type : House
Price : \$820,000 - \$870,000
Land Size : 950 sqm
View : <https://www.adcock.com.au/8114411>

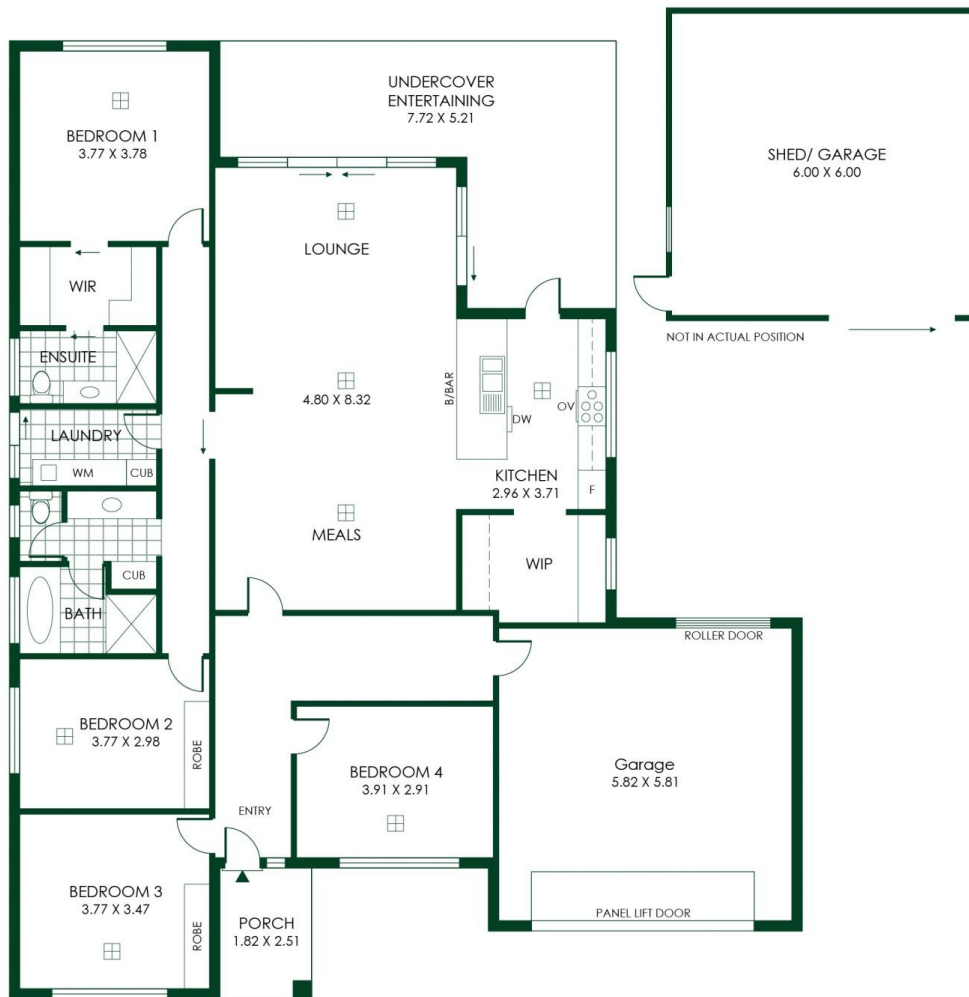


Jake Adcock
08 8388 4777



Andrew Adcock
08 8388 4777

[For full version visit the website](#)



278m²
TOTAL

170m²
Living

76m²
Shed/
Garage

5m²
Porch

27m²
Undercover
Entertaining

