



8 Clayfield Court Woodside SA

4 2 2

Hover amongst the hills like you own them; a privilege you'll savour from the spectacular lens of a Rossdale Home holding garden and valley captive from the most stunning, cul-de-sac stage.

For the discerning hills-dweller, this sophisticated, solar-booster 4-bedroom design uses its landscaped, gently graduating quarter acre to the utmost effect.

From the detached double garage with full undercroft storage and extra guest parking to the shrubbed and hedged gardens framing a paved patio terrace, a few adventurous steps away from an ambient firepit finale.

Your first step inside the split-level home steers left for a master suite, right to plush formal living, and descends for the inescapable open plan kitchen, living and dining zone

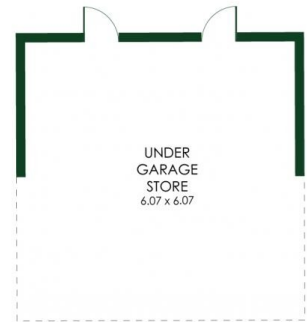
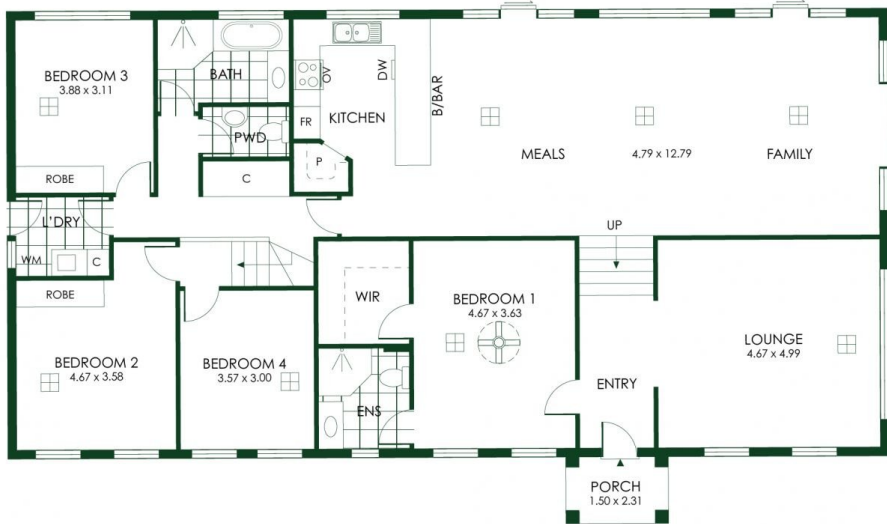
Price : Contact Agent
Land Size : 1067 sqm
View : <https://www.adcock.com.au/8033740>



Nikki Seppelt
08 8388 4777



Andrew Adcock
08 8388 4777



(NOT IN ACTUAL LOCATION)



(NOT IN ACTUAL LOCATION)

265m²

TOTAL

188m²

Living

37m²

Garage

3m²

Porch

37m²

Store

