




ADCOCK

R E A L E S T A T E



25 Onkaparinga Valley Road Balhannah SA

4  1  3 

Botanical beauty with heart-of-town impact.

Few homes stir as many superlatives as this renovated 1970s style deeply set on a lovingly curated 5420sqm block - and framed by garden glory, its heart of town position is all but forgotten, until you need it.

From the firepit to the Parterre gardens, the canopy of seasonal colour to the tranquil banks of a winter creek; this is for the semi-retired, the empty nester, or families with short attention spans - three, two, one, go?

The big, double brick home, rich in the fabric of its era hosts three spacious bedrooms plus a study, huge garden-grabbing windows, and retro living-to-dining-room glass dividers, all paired with a few welcome upgrades.

Price : Contact Agent

Land Size : 5420 sqm

View : <https://www.adcock.com.au/8033613>

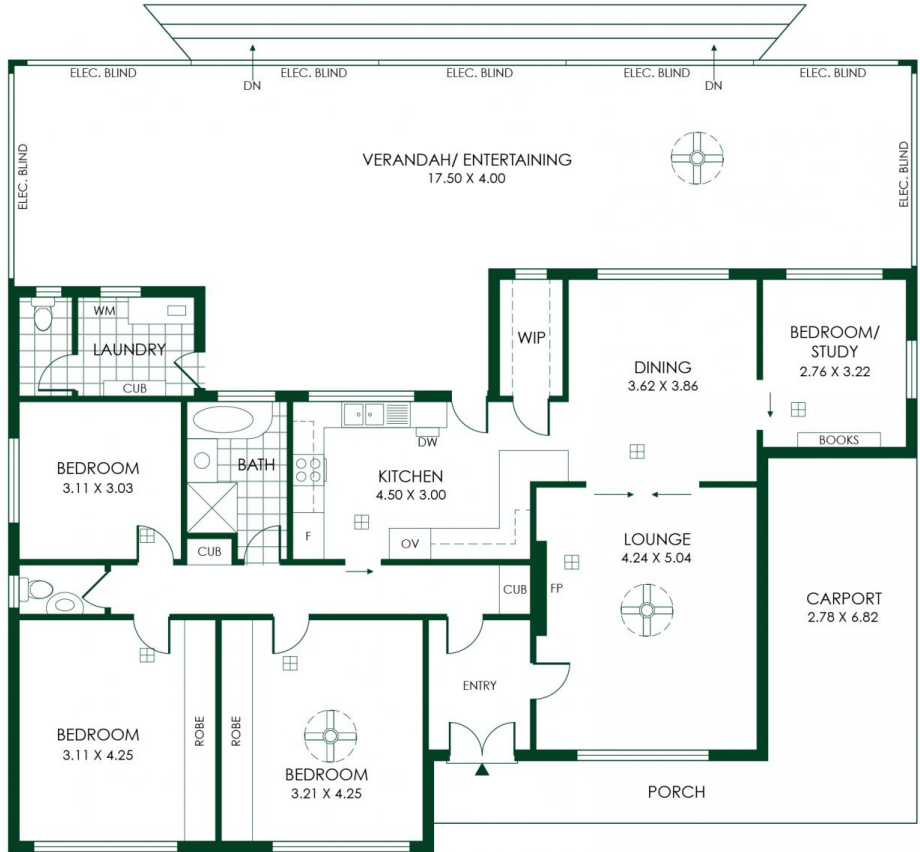
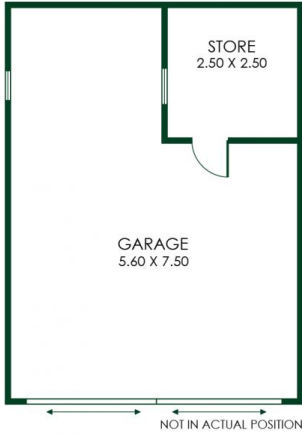


Andrew Adcock
08 8388 4777



Nikki Seppelt
08 8388 4777

NOT IN ACTUAL POSITION



292m²

TOTAL



135m²

Living



4m²

Wood Shed



41m²

Garage/Store



28m²

Porch/Carport



84m²

Verandah/Entertaining

