



8 Andrewville Terrace Littlehampton SA

3 1 1

Your Spring Park Farm step-up to country charm...

Cottage style that shoots looks across the reserve, sweeps a corner 579sqm block, and buys the first-timer, investor, or downsizer a value-adding opportunity into a boutique hills township in demand?

And here in Spring Park Farm, sporting the charm of a bullnose veranda and reserve-grabbing panes of this 2004-built 3-bedroom design, is all the persuasion you need.

Inside, floating floors coax you past the master bedroom and formal lounge into open plan living at large where indoor/outdoor flow is easy; how you configure the layout is

Type : House
Price : \$601,500
Land Size : 579 sqm
View : <https://www.adcock.com.au/7184184>

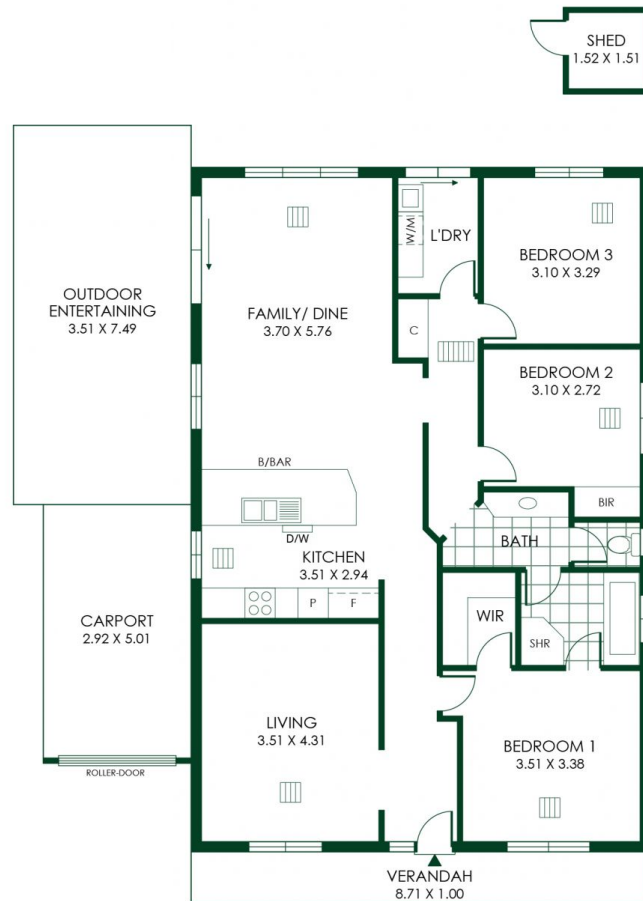


Andrew Adcock
08 8388 4777



Nikki Seppelt
08 8388 4777

[For full version visit the website](#)



176m²

TOTAL

123m²

Living

3m²

Shed

15m²

Carport

9m²

Verandah

26m²

Outdoor
Entertaining





ANDREWVILLE TERRACE

8
579m²
(dpprox.)

40.93m
16.70m
30.00m
13.48m